

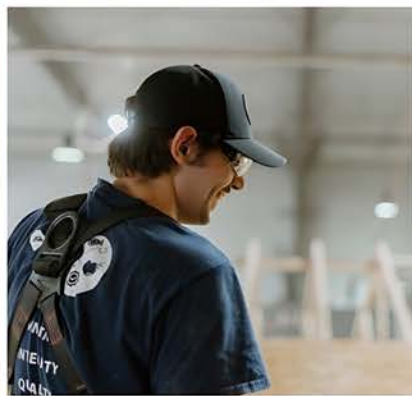
# modular construction



## Housing Solutions

**Grandeur**

**Ontario**



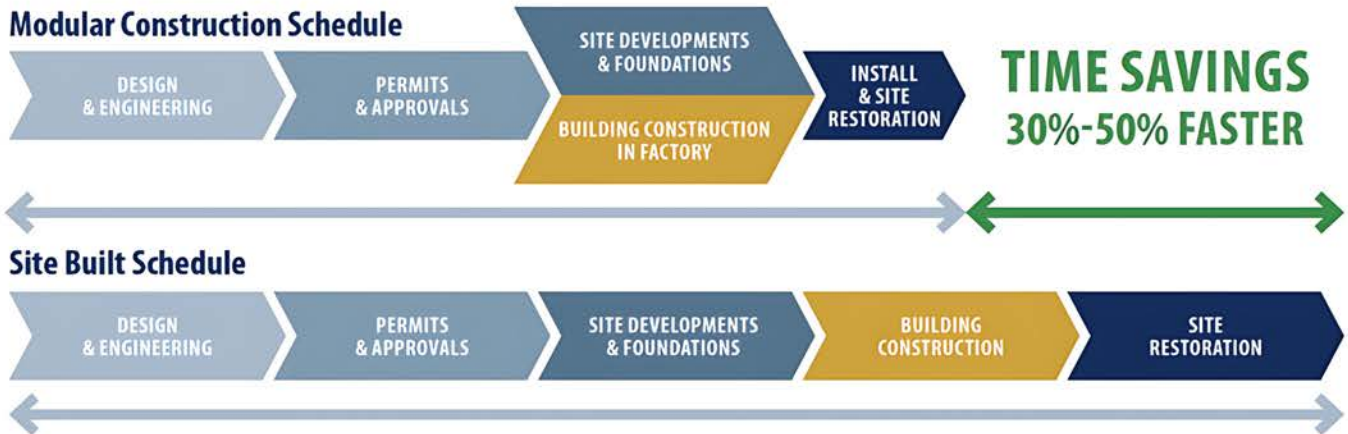
As a family-owned business, the core values of integrity, quality, family, and commitment have guided us through changing landscapes and act as the foundation as Grandeur grows.

As industry leaders, Grandeur continues to strive toward maintaining the highest quality, sustainability, and innovation with every project we construct.





### Modular Construction Schedule



## SINGLE FAMILY HOUSING SOLUTIONS

At Grandeur, we deliver high-quality single-family modular homes designed to fit your lifestyle and future. Built in a controlled environment, modular construction significantly reduces timelines and minimizes material waste, making it a smart and efficient option for families across rural, remote, or urban areas.

Our homes are carefully designed with energy efficiency, durability, and comfort in mind—ensuring lasting value for you and your family. With a wide range of customizable floor plans and features, we make it simple to create a home that reflects your needs and personal style.

Check out the infographic to see how modular construction saves time and streamlines the building process. With Grandeur’s expertise, you can enjoy a faster, more efficient path to homeownership without compromising quality. Let’s work together to build the home you’ve been dreaming of.

---

HOUSING SOLUTIONS



[WWW.GRANDEURHOUSING.COM](http://WWW.GRANDEURHOUSING.COM)







**Grandeur**

MODEL

**GH16004**

3 BEDROOMS

TYPE

SINGLE-FAMILY RESIDENCE

28' x 52' Building

1,456 sq. ft.

3 Bed, 2 Bath



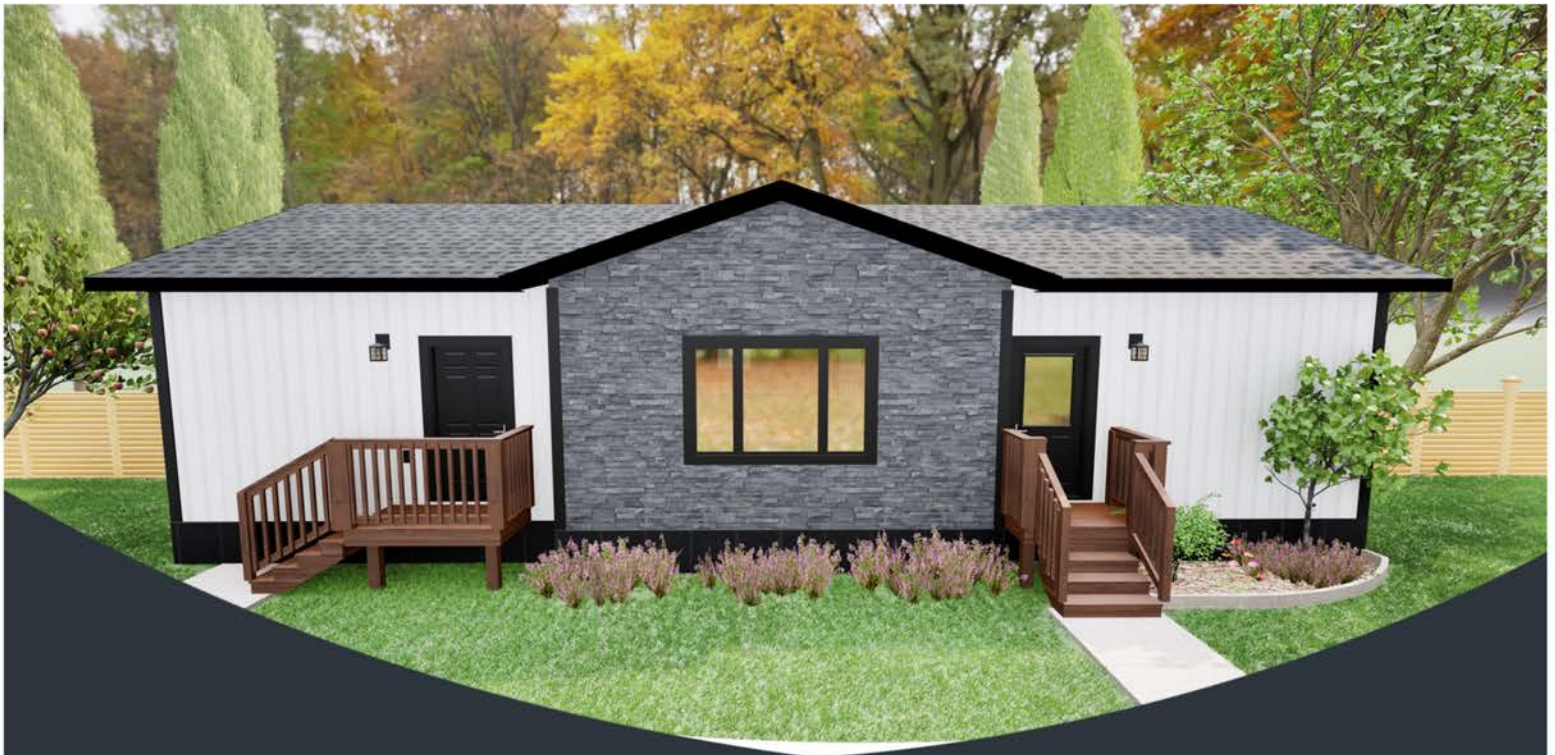
BATHROOM



KITCHEN



[WWW.GRANDEURHOUSING.COM](http://WWW.GRANDEURHOUSING.COM)



**Grandeur**

MODEL

**GH20017**

3 BEDROOMS

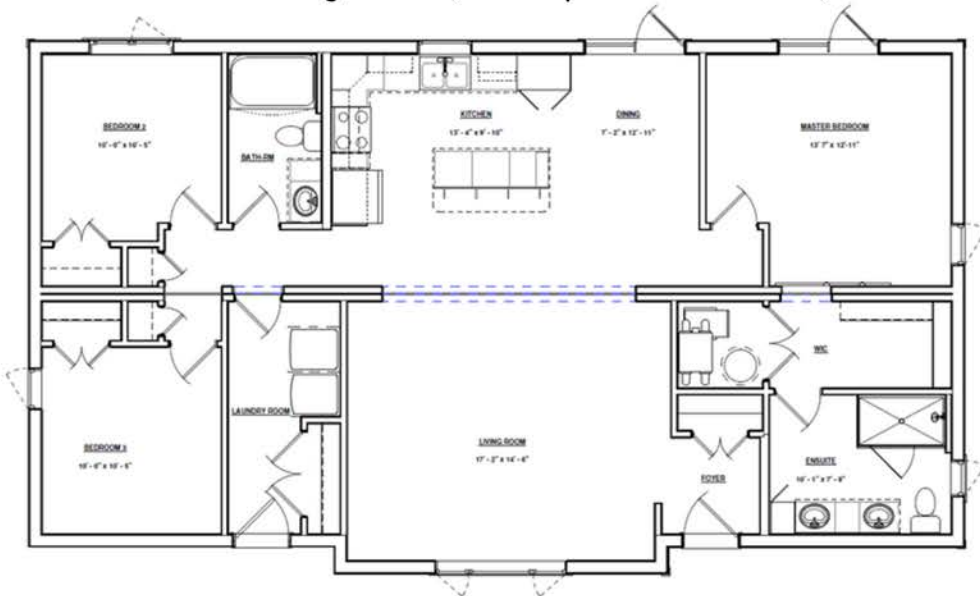
TYPE

SINGLE-FAMILY RESIDENCE

29' x 52' Building

1,484 sq. ft.

3 Bed, 2 Bath



BATHROOM



KITCHEN



[WWW.GRANDEURHOUSING.COM](http://WWW.GRANDEURHOUSING.COM)



**Grandeur**

MODEL

**GH20059**

3 BEDROOMS

TYPE

SINGLE-FAMILY RESIDENCE

30' x 54' Building

1,620 sq. ft.

3 Bed, 2 Bath



BATHROOM



KITCHEN



[WWW.GRANDEURHOUSING.COM](http://WWW.GRANDEURHOUSING.COM)



**Grandeur**

MODEL

**GH20145**

3 BEDROOMS

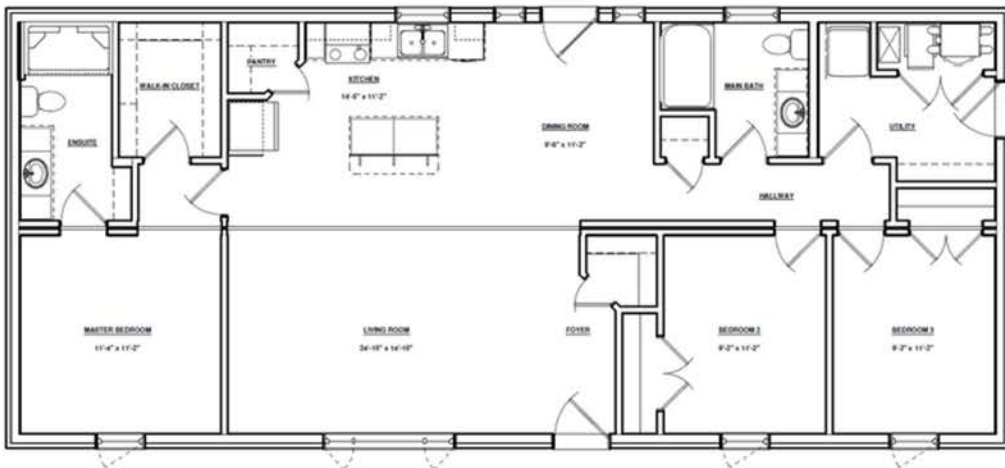
TYPE

SINGLE-FAMILY RESIDENCE

24' x 56' Building

1,344 sq. ft.

3 Bed, 2 Bath



BATHROOM



KITCHEN



[WWW.GRANDEURHOUSING.COM](http://WWW.GRANDEURHOUSING.COM)



**Grandeur**

MODEL

**GH20216**

3 BEDROOMS

TYPE

SINGLE-FAMILY RESIDENCE

30' x 62' Building

1,860 sq. ft.

3 Bed, 2.5 Bath



BATHROOM



KITCHEN



[WWW.GRANDEURHOUSING.COM](http://WWW.GRANDEURHOUSING.COM)



**Grandeur**

MODEL

**GH20229**

4 BEDROOMS

TYPE

SINGLE-FAMILY RESIDENCE

32' x 62' Building

1,984 sq. ft.

4 Bed, 2 Bath



BATHROOM



KITCHEN



[WWW.GRANDEURHOUSING.COM](http://WWW.GRANDEURHOUSING.COM)



**Grandeur**

MODEL

**GH21029**

3 BEDROOMS

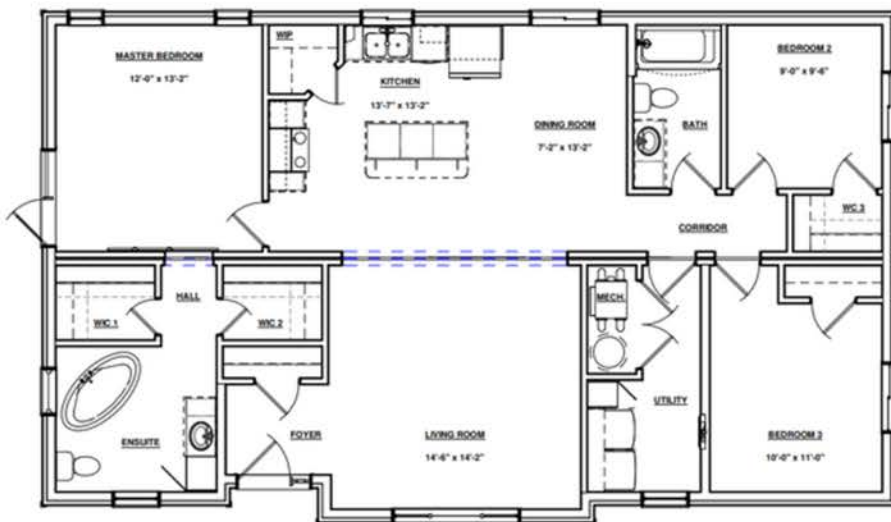
TYPE

SINGLE-FAMILY RESIDENCE

29' x 49' Building

1,360 sq. ft.

3 Bed, 2 Bath



BATHROOM



KITCHEN



[WWW.GRANDEURHOUSING.COM](http://WWW.GRANDEURHOUSING.COM)



**Grandeur**

MODEL

**GH21117**

4 BEDROOMS

TYPE

SINGLE-FAMILY RESIDENCE

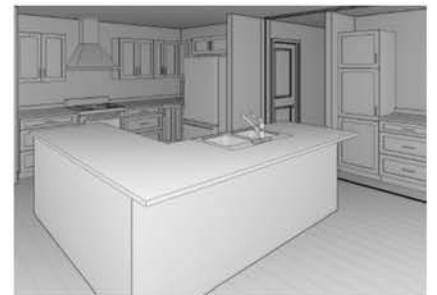
32' x 70' Building

2,240 sq. ft.

4 Bed, 2.5 Bath



BATHROOM



KITCHEN



[WWW.GRANDEURHOUSING.COM](http://WWW.GRANDEURHOUSING.COM)



**Grandeur**

MODEL

**GH24008**

3 BEDROOMS

TYPE

SINGLE-FAMILY RESIDENCE

32 x 52' Building

1,644 sq. ft.

3 Bed, 2 Bath



BATHROOM



KITCHEN



[WWW.GRANDEURHOUSING.COM](http://WWW.GRANDEURHOUSING.COM)



**Grandeur**

MODEL

**GH24100**

2 BEDROOMS

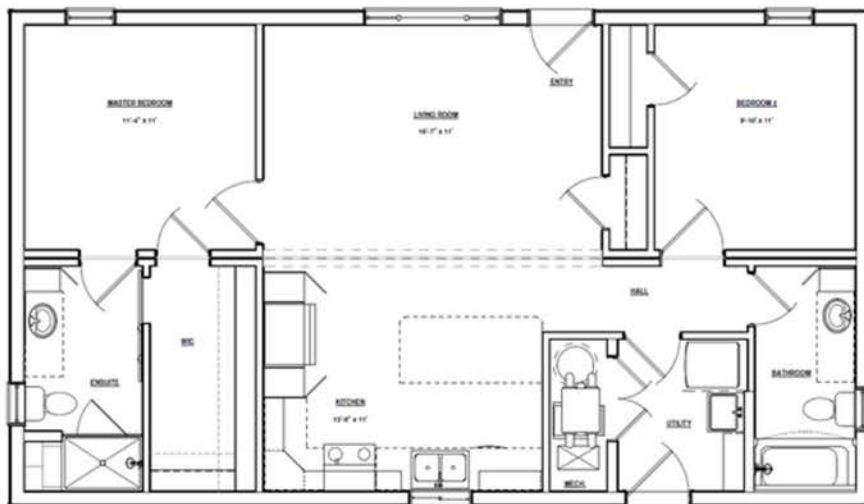
TYPE

SINGLE-FAMILY RESIDENCE

24' x 42' Building

1,008 sq. ft.

2 Bed, 2 Bath



BATHROOM



KITCHEN



[WWW.GRANDEURHOUSING.COM](http://WWW.GRANDEURHOUSING.COM)



**Grandeur**

MODEL

**GH24101**

3 BEDROOMS

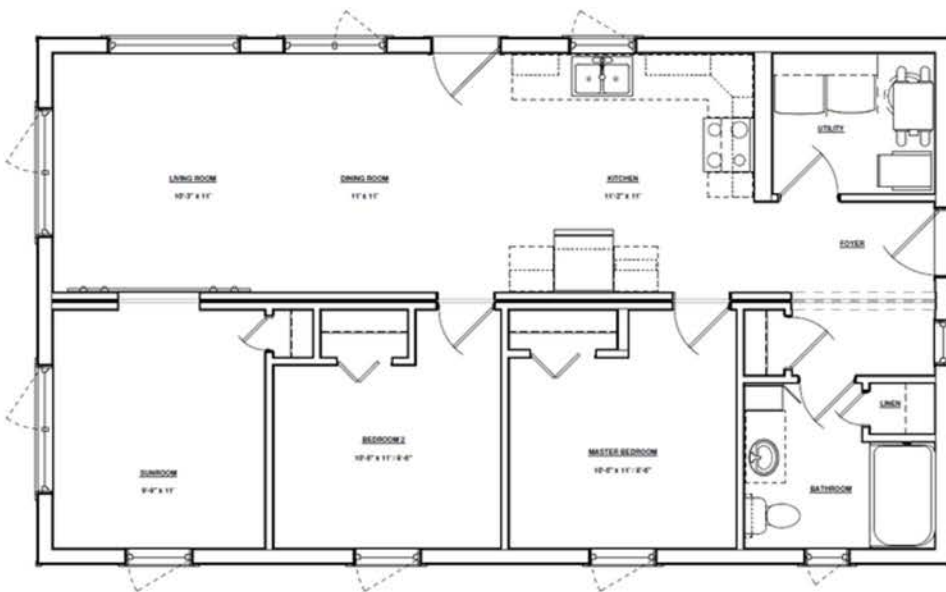
TYPE

SINGLE-FAMILY RESIDENCE

24' x 42' Building

1,008 sq. ft.

3 Bed, 1 Bath



BATHROOM



KITCHEN



[WWW.GRANDEURHOUSING.COM](http://WWW.GRANDEURHOUSING.COM)

# Grandeur

Located in Winkler, Manitoba since 1976, Grandeur is a leader in the rapidly growing industry of manufactured and modular dwellings, as well as commercial and industrial buildings.

The Grandeur workshop functions much like an assembly line or factory, with an extremely efficient workflow. Grandeur proudly produces many components used in our projects through several sub-assembly workshops including a cabinet and finish mill, spray shop, and our own welding facility. Pairing this hi-tech method of building with a team that upholds our Cultural and Core Beliefs gives us a longstanding reputation of value and trust.

quality. value. trust.





**Grandeur**

[www.grandeurhousing.com](http://www.grandeurhousing.com)

401 Pembina Ave. E. | PO Box 2260 | Winkler MB R6W 4B9 | 204.325.9558

Follow us:

